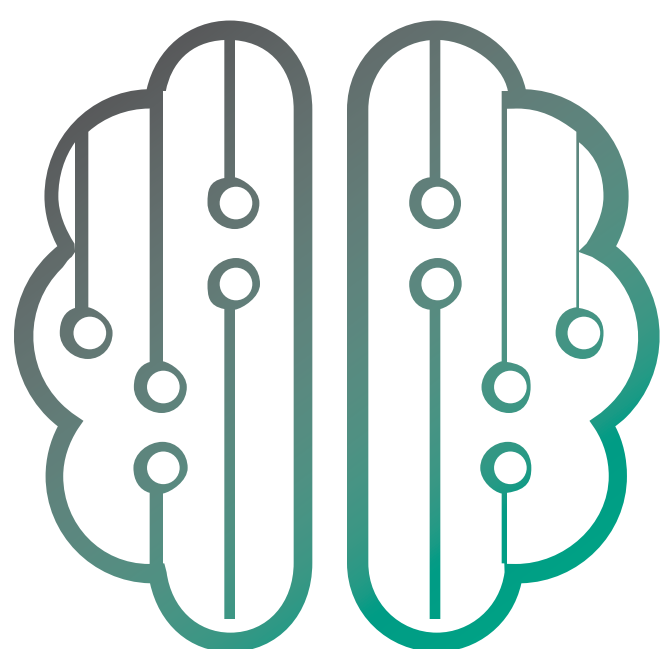




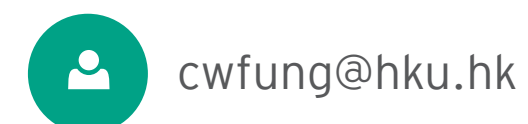
Department of Psychology  
The University of Hong Kong

香港大學心理學系



# Clinical Psychology

Postgraduate Prospectus 2021-2023



[cwfung@hku.hk](mailto:cwfung@hku.hk)



Department of Psychology



[www.psychology.hku.hk](http://www.psychology.hku.hk)

# DEPARTMENT OF PSYCHOLOGY

The field of psychology is dedicated to the scientific study of behaviour, including thought, feeling and action, and viewed from social, developmental, cognitive, neurological, and biological perspectives. Its teaching at the University dates back to before 1950 when it was conducted in a joint Philosophy/ Psychology Department. In 1968, Psychology became a founding department of the Faculty of Social Sciences. From that time on, the Department has contributed to developing the discipline both locally and internationally through dedicated teaching and research work often in collaboration with colleagues from different parts of the world. According to the 2020 QS World University Rankings by subject, Psychology at the HKU ranks 31st in the world, and ranks the first in Asia according to the 2021 Times Higher Education World University Rankings.

Psychology at HKU is represented by over 20 faculty members with different areas of expertise, including cognitive psychology, clinical psychology and neuropsychology, educational and developmental psychology, as well as social psychology.

Our goal as engaged and dedicated educators is to create and transfer knowledge. To that end, the Department of Psychology offers a broad range of courses to enrich the learning experience of students.

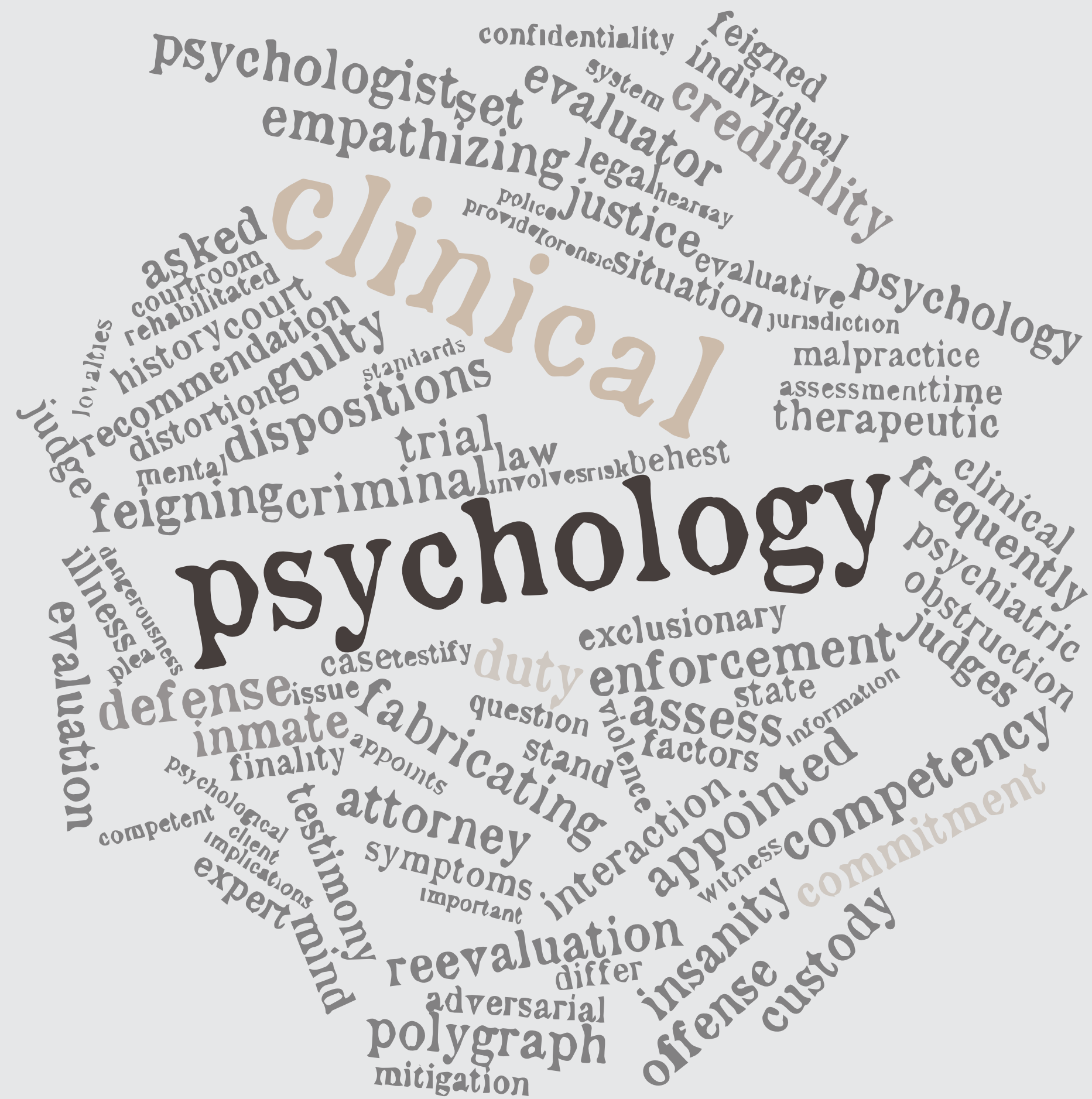


# INTRODUCTION

Clinical psychology is a scientific discipline that aims to understand, prevent, and relieve psychological distress and dysfunction, as well as to promote well-being and personal development. Clinical psychologists (CPs) are mostly employed in hospitals, government departments, counselling service units, and non-governmental organisations. There are also approximately 100 CPs in private practice. The most common daily duties of CPs include conducting psychological assessment, psychological intervention and therapy, health educational programmes, training and consultation, as well as conducting scientific research.

The University of Hong Kong offers three postgraduate programmes in clinical psychology, including the Master of Social Sciences in Clinical Psychology Programme, the Doctor of Psychology (Clinical Psychology) Programme, and the Doctor of Philosophy (PhD) in the field of Clinical Psychological Sciences Programme.

The Master of Social Sciences (MSocSc) in the field of Clinical Psychology Programme of The University of Hong Kong is the first postgraduate programme designed to train professional clinical psychologists to serve the community of Hong Kong. Since its inception in 1971, the programme has produced over 280 qualified clinical psychologists in Hong Kong. The programme transitioned from alternate year intake to annual intake in 2019.



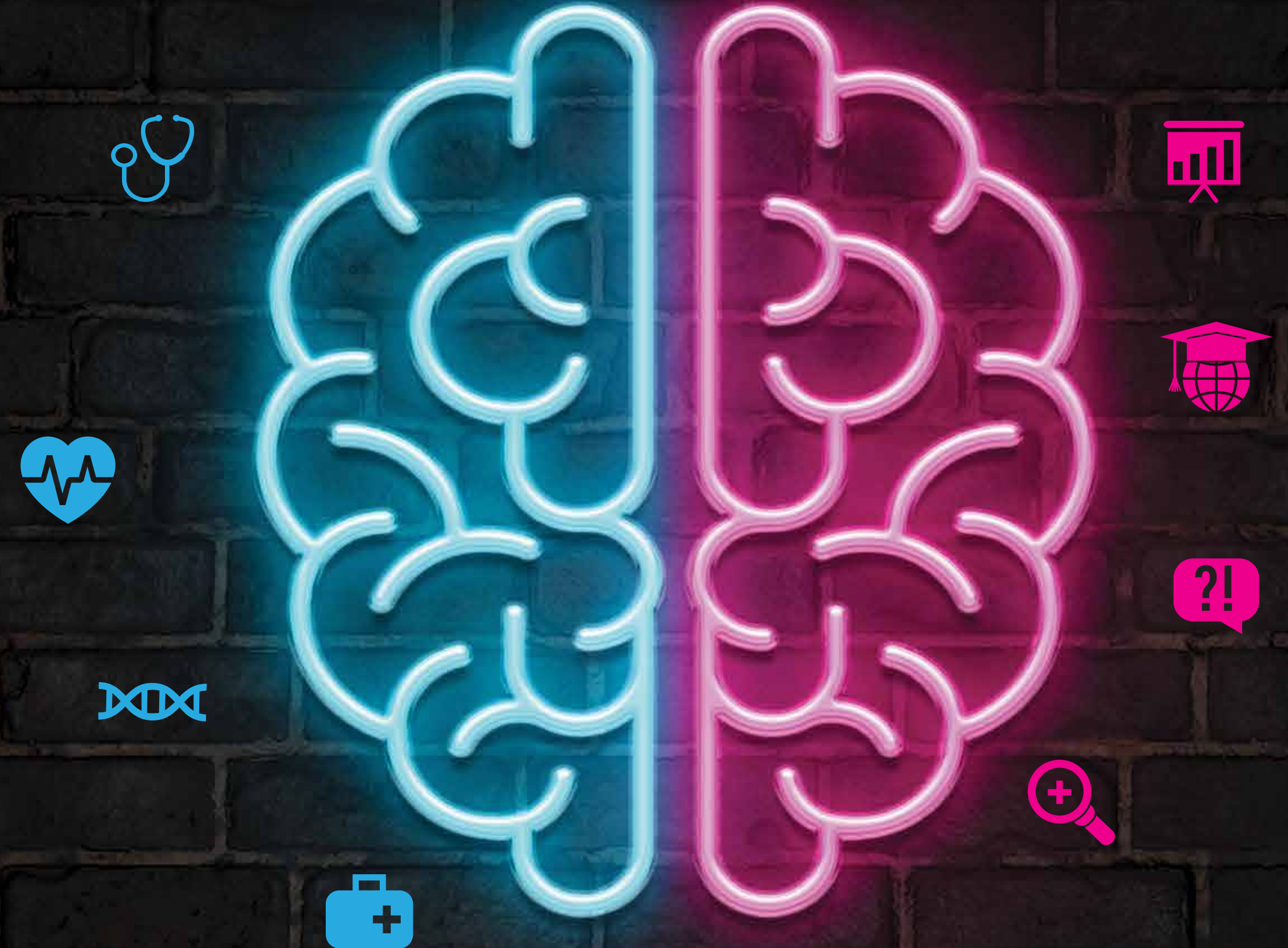
## INTRODUCTION

The MSocSc (CP) programme is the building block of the clinical psychology training. It covers the core competencies required in being a professional and competent clinical psychologist.

Our Doctor of Psychology (PsyD) in Clinical Psychology, established in 2004, is a first-of-its-kind programme offered in Hong Kong. Its primary aim is to provide advanced training for experienced CPs who hold a recognized MSocSc degree in Clinical Psychology or equivalent to become professional leaders in the field.

Our PhD programmes (one in Clinical Psychological Science and the other one with a specialization in Clinical Psychology) provide vigorous training for students seeking excellence in academic and scientific research training in addition to the CP professional training.

Aspire to become a clinical psychologist?



Have a passion to serve others?

# MASTER OF SOCIAL SCIENCES IN CLINICAL PSYCHOLOGY



# MASTER OF SOCIAL SCIENCES IN CLINICAL PSYCHOLOGY

The Department of Psychology offers a postgraduate programme leading to the degree of Master of Social Sciences in the field of clinical psychology. The programme aims to train competent and professional clinical psychologists and has an emphasis on evidence-based practices.

## STRUCTURE

The curriculum extends over two years full-time including the intervening vacations between the semesters. Whereas the first year of the curriculum focuses on the theoretical foundations and basic skills training in clinical psychology, the second year includes specialized training in assessment skills, and the application of psychological theories and models to evidence-based clinical practice in a wide range of settings.

## SYLLABUS

Students are required to complete 15 taught courses, a dissertation and 5 practicum courses over the two-year full-time study.

### First year\*

- Induction programme
- Ethics and professional issues
- Individual psychotherapy I
- Individual psychotherapy II
- Psychopathology I
- Psychopathology II
- Cognitive assessment
- Assessment of personality and psychopathology
- Research methods and statistics I
- Research methods and statistics II
- Clinical seminar I
- Practicum I
- Practicum II

### Second year\*

- Community and health psychology
- Family and group therapy
- Clinical neuropsychology
- Clinical seminar II
- Ethics and professional issues
- Dissertation
- Practicum III
- Practicum IV
- Practicum V

\* The courses listed above may be offered at a different year of study.

## ENTRY REQUIREMENTS

To be eligible for admission to the programme, a candidate shall

- a) comply with the regulations for the degree of Master of Social Sciences;
- b) hold a bachelor's degree with a major in psychology or a recognized equivalent qualification;
- c) have had an empirical research dissertation completed in the bachelor's degree programme or another equivalent programme in psychology (we may consider first-authorship on a published empirical study in psychology or a related field as equivalent);
- d) pass a qualifying examination prior to admission, if required; and take other tests as may be prescribed, and have the score reports of such tests sent to the Programme Admissions Advisor;
- e) be eligible for Graduate Membership of the Hong Kong Psychological Society; and
- f) preferably have relevant working experience.

## ADMISSION

The programme admits students every year. Major considerations for admission into the programme include level of academic development, quality of research experience, personal maturity and motivation, communication skills, a basic understanding of clinical psychology, and relevant working experience. Details of the application procedure and programme information can be obtained from the admission website. Application shall be made on-line via <https://www.aal.hku.hk/tpg/>.

# DOCTOR OF PSYCHOLOGY (CLINICAL PSYCHOLOGY)





# DOCTOR OF PSYCHOLOGY (CLINICAL PSYCHOLOGY)

The Department of Psychology offers a postgraduate programme leading to the degree of Doctor of Psychology (Clinical Psychology). Emphasis is placed on a scientist-practitioner model of education. The Programme is designed to help candidates develop skills and knowledge with the view to enhancing clinical and research development in the profession, and to equip the candidates in becoming specialists in the field.

## STRUCTURE

The curriculum extends over a minimum of twenty-four months (full-time) or thirty-six months (part-time). Candidates are required to complete the coursework satisfactorily and a thesis as set out below. The courses cover theoretical and applied aspects of clinical psychology.

## SYLLABUS

Doctoral candidates should attend all 6 courses in List A and at least 1 course in List B:

### List A

- Supervised reading in clinical specialty
- Conceptual and methodological issues in psychological research I
- Conceptual and methodological issues in psychological research II
- Thesis
- Clinical specialty training
- Research ethics for graduate students

### List B

- Community and health psychology
- Clinical seminar II
- Applied developmental psychology
- Clinical seminar III
- Seminar in neuroscience
- Developmental neuroscience
- Neurobiological basis of psychological issues
- Postgraduate seminar in scientific writing for psychology
- Postgraduate seminar in cognitive psychology
- Postgraduate seminar in social psychology
- Postgraduate seminar in developmental psychology

## ENTRY REQUIREMENTS

To be eligible for admission to the programme, a candidate shall

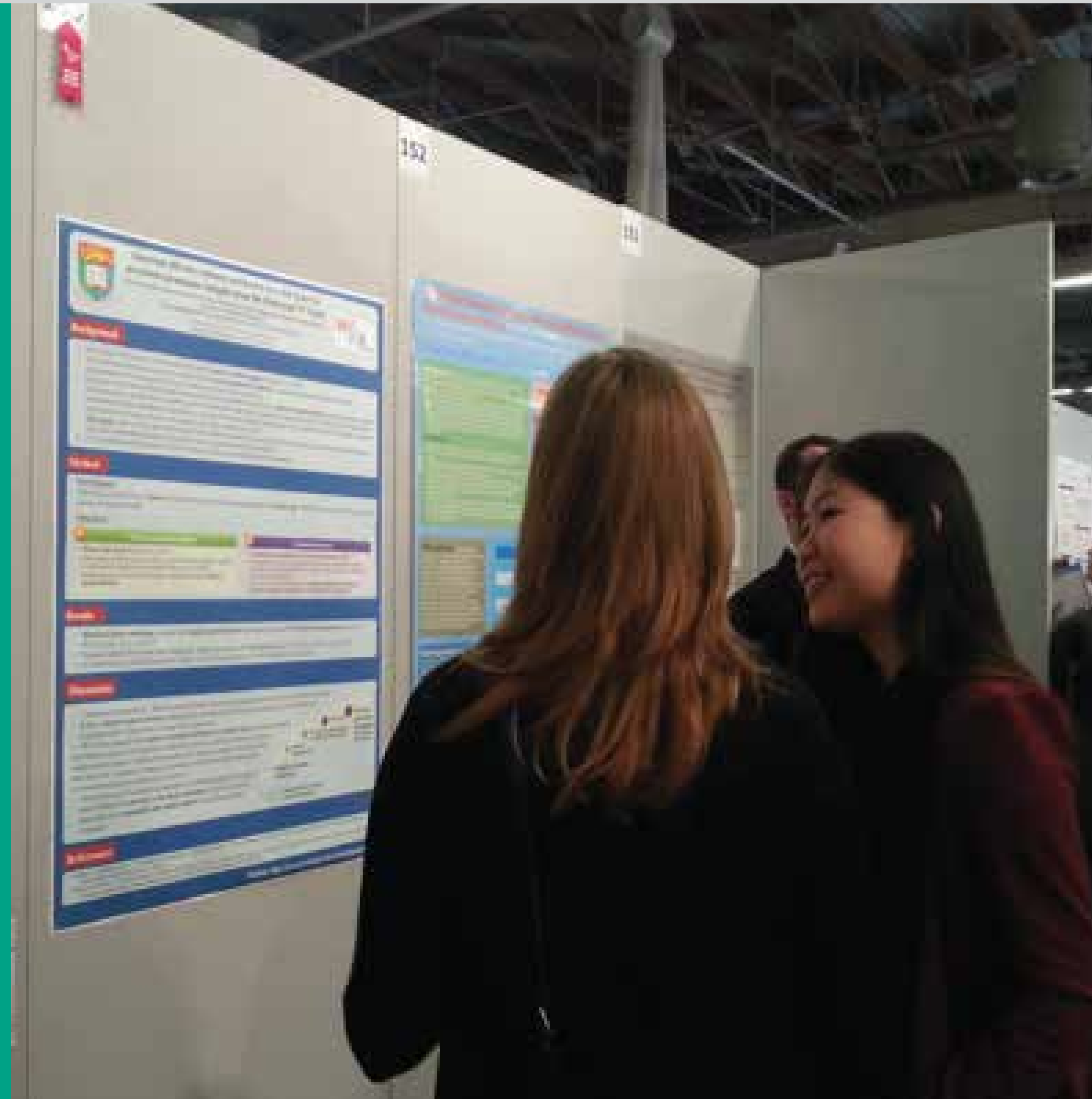
- (a) comply with the [General Regulations](#);
- (b) holding a Master of Social Sciences in Clinical Psychology degree of this University, as appropriate; or a qualification of equivalent standard from this University or another comparable institution accepted for this purpose;
- (c) candidate who is seeking admission on the basis of a qualification from a university or comparable institution outside Hong Kong of which the language of teaching and/or examination is not English, shall satisfy the University English language requirement applicable to higher degrees as prescribed under the [General Regulation G2 \(b\)](#);
- (d) satisfying the examiners in a qualifying examination if required; and
- (e) preferably shall have working experience in the field of Clinical Psychology, as appropriate.

Application for exemption from the above requirements shall be considered on a case by case basis.

## ADMISSION

The programme admits students every year. Online Application should be submitted via the website: <https://www.aal.hku.hk/tpg/>. The closing date of application is May 31.

# DOCTOR OF PHILOSOPHY (PHD) PROGRAMMES



# DOCTOR OF PHILOSOPHY (PHD) PROGRAMMES

The PhD programmes aim to train outstanding students and prepare them for the increasingly complicated and demanding roles as clinical scientists. The two PhD curricula are constantly being reviewed with a view to improving continuously to meet societal needs, but the ultimate goal of the PhD programmes is to produce clinical scientists, future faculty and leaders in clinical sciences who are highly competent in research, university-level teaching, as well as clinical service delivery.

The University of Hong Kong also offers a joint PhD programme between King's College London (KCL) and The University of Hong Kong (HKU), where high calibre PhD students are given the opportunity to spend up to half of their time to be trained at each institution and be awarded PhD degrees from both universities on completion of this PhD programme.

# ADMISSIONS

The programme admits students every year. Candidates under this research track are expected to be working on a research area relevant to clinical psychology. Applicants shall look for their interested research areas and search for potential supervisor in the Department of Psychology. Applicants shall indicate their field of study as “Clinical Psychology” when submitting their [online application](#).

A variety of bases for admission will be adopted. The programme seeks applicants who are interested in both research and clinical practice. Successful applicants are expected to have outstanding academic credentials, demonstrate evidence of scholar ability, and show exemplary interpersonal and communication skills, as well as a strong motivation to excel in both clinical and research arenas.

# COURSE DESCRIPTION

List of postgraduate courses in alphabetical order:  
(For the most up-to-date information about the course descriptions,  
please visit <https://www.psychology.hku.hk> )

## **Applied developmental psychology**

This course focuses on an integrated study of human development across the life span with implications for educational psychology. It aims at familiarizing students with current state of knowledge and major theories of human development with particular emphasis on childhood and adolescence. The interrelationship among biological, cognitive, social, and educational factors that influence human development will be examined. In particular the influence of Chinese culture and context on development during the childhood and adolescence will be discussed.

(Assessment: 100% coursework)

## **Assessment of personality and psychopathology**

This course focuses on the theoretical, practical, and cross-cultural issues related to the assessment of psychopathology and personality. Trainees will be exposed to a variety of clinical evaluation protocols in order to evaluate the level of functioning and symptomatology of an individual. They will also be exposed to the application of these techniques to a wide range of psychiatric problems as stipulated in DSM-5. These include mental state examination, test administration and interpretation, diagnostic decision making, integration of material derived from patient history and other relevant sources, and comprehensive case conceptualization.

(Assessment: 100% coursework)

## COURSE DESCRIPTION

### Clinical neuropsychology

This course aims to provide an overview of basic functional neuroanatomy and clinical neuropathology. Literature in neuroscience and clinical neuropsychology will be reviewed and discussed. Neuropsychological assessment approaches will be introduced.

(Assessment: 100% coursework)



## COURSE DESCRIPTION

### Clinical seminar I

A series of skill-training workshops will be offered to prepare students for further practical training in clinical placements. The course is composed of two arms: Assessment and Intervention. The Assessment arm covers core principles and strategies for intake interview with both adult and children populations. Intellectual assessment in the local context will be covered and commonly used tools for assessing a broad range of cognitive, behavioural, emotional, and social functions in children will also be introduced. The Treatment arm covers basic attitude and skills in counselling and forming therapeutic alliance, as well as specific skills used in cognitive and behavioural therapies.

(Assessment: 100% coursework)





## COURSE DESCRIPTION

### **Clinical seminar II**

The seminar provides in-depth clinical case discussions, with a focus on contemporary approaches to case conceptualization and treatment planning for a range of complex psychological problems. Emphasis is placed on integration of psychological theories and clinical practice, as well as training on therapeutic skills and treatment strategies for effective implementation. Students will get the chance to learn advanced knowledge and skills in specialist areas of psychological practice. Experienced clinicians and scholars will be invited to share their expertise on specialized topics.  
(Assessment: 100% coursework)

### **Clinical seminar III**

This seminar covers recent development of theories and the related practice in clinical psychology. Special emphasis will be placed on the integration of research, clinical formulation and intervention for evidence-based clinical decisions.  
(Assessment: 100% coursework)

## COURSE DESCRIPTION

### Clinical specialty training

Students should complete about 250 days of clinical specialty training (e.g. forensic psychology, health psychology, neuropsychology, rehabilitation psychology, or specific intervention approaches) that includes research and clinical work, the plan of which is agreed by the students and the respective supervisors, and endorsed by the Programme Director. Students will attend regular in-house case conferences where a forum is provided for students to present, discuss and reflect on the clinical work they are undertaking during their clinical specialty training. Students will also be provided with training on supervision, consultation and leadership skills for their professional development. The work of students is under continuous assessment (e.g. submission of logbook, case reports/presentation, research reports) by supervisors of the specialty training.

(Assessment: 100% practicum)



## COURSE DESCRIPTION

### Cognitive assessment

This course provides an introduction to the assessment of cognitive functioning. Students learn to administer, score, and interpret a number of commonly used cognitive tests. Students also learn to present test results in professional psychological reports. Related psychometric principles, professional ethics, and cultural issues will be discussed.  
(Assessment: 100% coursework)



## COURSE DESCRIPTION

### **Community and health psychology**

This course provides an overview of the history, context, and development of community psychology and health psychology. Students will be exposed to key concepts and values associated with the fields. They will also explore the application of community psychology and health psychology in the local context. The course provides ample opportunities for students to collectively develop and examine community-based initiatives to tackle mental health problems. Special emphasis is given to multicultural and diversity issues.

(Assessment: 100% coursework)

### **Conceptual and methodological issues in psychological research I**

First semester course, put on especially for 1st year postgraduate students, covering the basic research techniques used in psychological research. Topics include various data collection and data analysis techniques. Students in this course will learn how to design, conduct, analyze and report psychological research; and to evaluate other people's research critically.

(Assessment: 100% coursework)

## COURSE DESCRIPTION

### **Conceptual and methodological issues in psychological research II**

Second semester problem-based (i.e., PBL) course put on jointly for 1st year research postgraduate students and advanced undergraduates. The course is a follow-up of “Conceptual and methodological issues in psychological research I”. It adopts a problem-based approach to further students' knowledge of the techniques used in psychological research. Students will be asked to solve various problems and complete different tasks related to psychological research. They will have a chance to develop their ability to work and learn independently. The problems and tasks will also require them to learn the more advanced research designs and data analysis techniques. Prerequisite: Conceptual and methodological issues in psychological research I

(Assessment: 100% coursework)

### **Developmental neuroscience**

Developmental neuroscience is an interdisciplinary research topic that integrates neuroscience, cognitive science and developmental science. It aims to uncover the brain and neural mechanisms that underlie social, affective and cognitive development across the life span. Specific topics will include the introduction of theories and methods in developmental neuroscience, neuroplasticity, neural mechanisms that underlie the development of attention and perception processes, motor learning, memory, cognitive control, social-emotional processes. This course will examine these processes at different developmental stages, including infants, toddlers, adolescence and ageing population. This course will also cover the neural mechanisms underlying atypical development such as the Autism Spectrum Disorder (ASD).

(Assessment: 100% coursework)

## COURSE DESCRIPTION

### **Dissertation**

While in residence, each student proposes and completes a substantive, scholarly work relevant to clinical psychology. The dissertation must represent a student's individual work. The examiners may also prescribe an oral examination on the subject of the dissertation.

(Assessment: 100% coursework)

### **Ethics and professional issues**

The focus of this course is on the process of ethical decision making in the professional practice of clinical psychology. Models of ethical decision making will be introduced, critically discussed and applied. In addition to the Code of Professional Conduct published by the Hong Kong Psychological Society, a number of ethical codes, guidelines, and standards of practice will be reviewed.

(Assessment: 100% coursework)

## COURSE DESCRIPTION

### **Family and group therapy**

This course provides an overview of the theories and practice of family and group interventions. For Family Intervention, it covers fundamental concepts, theories and frameworks in working with families and couples. Students will be able to develop basic knowledge and different theories of family therapy and how it can be applied in special populations. The course will be conducted in didactic lectures with case illustrations, videos and/or exercises. The Group Intervention component aims to familiarize the trainees with the major theories, principles and techniques of group interventions through reading, discussion, videos and role plays. Group development, dynamics and different stages in the group processes will be examined. The empirical basis for efficacy of group interventions and group interventions for different populations and different psychological disorders will be addressed. (Assessment: 100% coursework)

### **Individual psychotherapy I**

This course introduces the common principles and skills of psychotherapies. In addition to reviewing the theoretical rationale and recent research and clinical literature, this course also focuses on the application of the empirically-supported therapeutic techniques to clinical and special populations. (Assessment: 100% coursework)

## COURSE DESCRIPTION

### Individual psychotherapy II

The course focuses on the application of evidence-based psychotherapeutic approaches to the treatment of specific psychological disorders in both adults and children. Cultural issues in the practice of psychotherapy will be discussed when appropriate. Experienced clinicians are invited to introduce common treatment approaches applied to different populations in Hong Kong. In addition, new developments and contemporary issues in psychotherapy will be critically examined.

(Assessment: 100% coursework)





## COURSE DESCRIPTION

### **Induction programme**

This course aims at engaging trainees in a number of orientation activities designed to provide them with a preliminary understanding of the theoretical and practical issues addressed in the programme and to prepare them for their first placement beginning in December of the year of training.

(Assessment: 100% coursework )

### **Neurobiological basis of psychological issues**

Human behavior is generated by complex psychophysiological mechanisms of the brain. This course is designed to provide a broad introduction to the biological basis of stress, emotion, and regulation of cognitive-affective processes affecting psychological health. The neurobiological basis of psychopathologies e.g. depression, anxiety, will be examined as examples to demonstrate the complex relationships between brain, behavior, and psychopathology.

(Assessment: 100% coursework)

### **Postgraduate seminar in cognitive psychology**

This seminar course will cover recent developments in the field of Cognitive Psychology, concentrating particularly on theoretical debates and empirical results that are likely to have considerable impact on the field. Theoretical and empirical articles will be read each week, and discussed in class. Discussions will be led by both the instructor and students in the class.

(Assessment: 100% coursework)

## COURSE DESCRIPTION

### **Postgraduate seminar in developmental psychology**

This seminar course will cover recent developments in the field of Developmental Psychology, concentrating particularly on theoretical debates and empirical results that are likely to have considerable impact on the field. Theoretical and empirical articles will be read each week, and discussed in class. Discussions will be led by both the instructor and students in the class.

(Assessment: 100% coursework)

### **Postgraduate seminar in social psychology**

This seminar course will cover recent developments in the field of Social Psychology, concentrating particularly on theoretical debates and empirical results that are likely to have considerable impact on the field. Theoretical and empirical articles will be read each week, and discussed in class. Discussions will be led by both the instructor and students in the class.

(Assessment: 100% coursework)

### **Postgraduate seminar in scientific writing for psychology**

This seminar course addresses writing skills in relation psychological research. Students will engage in a series of assignments designed to improve the fluency and quality of their writing. Particular efforts will be focused on improving the conceptual clarity of writing. Regular feedback will help students improve upon their writing skills.

(Assessment: 100% coursework)

### **Psychopathology I**

In this first course of Psychopathology, students will learn important theoretical concepts in the definition, aetiology, features and classification of mental disorders. Major disorders across the life span will be examined. Significant paradigms, such as biological, psychodynamic, cognitive-behavioural and relevant psychosocial theories will be discussed, together with special issues in the diagnosis and conceptualisation of specific mental disorders.

(Assessment: 100% coursework)

### **Psychopathology II**

This second course of Psychopathology uses a developmental psychopathology perspective to discuss major topics of mental health problems across the life span. It aims to enhance the conceptualisation and case formulation skills of trainees as scientist-practitioners. The topics will be examined in depth, with special emphasis on the integration of theoretical conceptualisation, research findings and clinical practice. Special attention will be given to current issues of concern in both the Eastern and Western contexts.

(Assessment: 100% coursework)

### **Research methods and statistics I**

The topics in this course include intermediate research methods and statistics. This course is designed to extend the knowledge and skills of students on research design and quantitative methods, using empirical examples in psychology to illustrate the key concepts and statistical reasoning involved. Students learn to become more intelligent consumers of research findings and more independent in conducting their own empirical studies.

(Assessment: 100% coursework)

## COURSE DESCRIPTION

### **Research methods and statistics II**

The topics in this course include intermediate research methods and statistics. This course is designed to extend the knowledge and skills of students on research design and quantitative methods, using empirical examples in psychology to illustrate the key concepts and statistical reasoning involved. Students learn to become more intelligent consumers of research findings and more independent in conducting their own empirical studies. At the end of this course, each student will have developed a viable research proposal in preparation for his/her thesis according to standards of the American Psychological Association.

(Assessment: 100% coursework)

### **Seminar in neuroscience**

This course is a tutorial-based reading course in specialist areas of cognitive and behavioral neuroscience. It will include group presentations, in the context of organized formal debates, and in-depth group discussions of individual journal articles, providing an opportunity for students to examine critically the neuroscientific approach to understanding mind and behavior.

(Assessment: 100% coursework)

### **Supervised reading in clinical specialty**

Candidates are required to attend, during the first year, research seminars relevant to a chosen area of specialization. A literature review and conceptual analysis of the thesis area is due at the end of the second semester.

(Assessment: 100% coursework)

### **Thesis**

Candidates will complete a thesis that embodies a critical study within the field of clinical psychology, including an empirical element, and represents an original contribution to knowledge deserving publication. Candidates may commence their work early in candidature concurrently with Supervised Reading in Clinical Specialty. Candidates will also participate in research seminars commencing after confirmation of candidature which will contribute to their research programmes and will serve as forums for presenting their work in progress on a regular basis.

(Assessment: 100% coursework)

## COURSE DESCRIPTION

### Practicum I-V

Each of the five Practicum courses consists of a minimum of 44 days of external clinical placement. In addition, over the 2-year long programme, students will be required to pass a minimum of 30 days of in-house supervised clinical activities with the Psychological Service Unit. Through the on-site clinical placements, students will have the opportunity to learn and work under the direct supervision of experienced clinical psychologists who are providing services in different settings such as public hospitals, social services agencies, and government departments. They will gain practical experience in working with a variety of client groups with different problems across the life span. The training includes supervised practice in assessment, case formulation, and various forms of intervention. Involvement in case conferences, workshops, seminars, or projects within the placement settings may also form part of the training. Students will learn the professional ethics, service contexts and rules in different settings, and acquire knowledge and skills to work effectively in different teams or organizational structures.

(Assessment: 100% practicum)



# MORE ABOUT PRACTICUM

The basic training of any clinical psychologist must involve the passing of three core competencies: clinical knowledge, clinical practice, and clinical research.

Clinical practice training is undertaken in two parallel routes, one is through the Psychology Department's own Psychological Services Unit (PSU) in which the trainees are supervised by our clinical staff to work with actual clients; the other is through clinical placements offered by the Honorary Clinical Supervisors practising in the field.

Currently, HKU has over 180 Honorary Clinical Supervisors offering one-on-one clinical training in over 60 sites. All our Supervisors are working as clinical psychologists on site, including public general or psychiatric hospitals, specialist clinics, government-run or funded welfare service units, correctional institutions and other law enforcement offices, university counselling centres, etc., that provide a wide variety of direct clinical psychology services.

In addition, most of the practicum sites have been accredited by the Division of Clinical Psychology, HKPS, which ensures the quality of the clinical supervision. (<http://www.dcp.hkps.org.hk>).





# PSYCHOLOGICAL SERVICES UNIT (PSU)

The PSU was established in 1988. It serves both as an outpatient service unit and a training facility for trainees in clinical psychology and educational psychology. This in-house clinic aims at providing a platform for trainees to practise as well as to integrate and apply their knowledge and skills in a non-evaluative environment while providing psychological services to the general public. It provides valuable opportunities for trainees to a) follow through a case from inception to termination, b) handle cases independently including administrative work assessment and treatment, and c) learn from each other through the buddy system and clinical supervision.

Trainees are expected to complete a minimum of 30 PSU days and to take up as well as follow through on both assessment and treatment cases over 2 years. These cases would typically include service users from across the life span.



# FUNDING AND RECOGNITION STATUS OF THE PROGRAMMES

The MSocSc and the PhD programmes are funded by public money through the advice of the University Grants Committee (UGC). The MSocSc (CP) programme is recognised by the Division of Clinical Psychology (DCP), Hong Kong Psychological Society (<https://www.hkps-dcp.org.hk/en/>).

DCP is the leading professional organisation on clinical psychology in Hong Kong whose members comprise the majority of the qualified clinical psychologists practicing in the community. DCP recognition means the programmes have passed the training standards agreed by the practitioners in the field. Graduates of these two programmes are automatically eligible for DCP membership.

DCP members who have accumulated at least one year of full-time professional working experience may apply to become a Registered Clinical Psychologist of the Hong Kong Psychological Society (<https://www.hkps.org.hk>).

Graduates of the MSocSc (CP) programme are also eligible to register with Hong Kong Institute of Clinical Psychologists (HKICP), the clinical psychologist professional organisation accredited by Department of Health, The Government of the Hong Kong Special Administrative Region, under the Pilot Accredited Registers Scheme of Healthcare Profession ([https://www.ars.gov.hk/en/accr\\_pro\\_bodies.html](https://www.ars.gov.hk/en/accr_pro_bodies.html)).



# CAREER PROSPECTS

In Hong Kong, most clinical psychologists enter the profession with a recognized master's degree in clinical psychology.

With the exception of those who leave Hong Kong or the profession, graduates of our clinical psychology programmes have always found employment as clinical psychologists in Hong Kong.

Our graduates are represented in different professional settings, including the Hospital Authority, Social Welfare Department, Department of Health, Correctional Services Department, Hong Kong Police Force, non-government organizations, student counselling centres, and many more.

About 20-25 percent of clinical psychologists practicing in Hong Kong have a doctoral degree in Clinical Psychology or a related field, or are actively pursuing one.

Some of our graduates have immigrated to other countries. Whether they can work as a clinical psychologist in those countries is dependent upon the respective laws and regulations.



# SCHOLARSHIPS, AWARDS AND EXCHANGE OPPORTUNITIES

Various scholarship opportunities are provided to support students studying in our clinical psychology programmes. Some of these scholarships are open for application while some are awarded through nomination. There are also exchange and overseas attachment scholarships with funding support to help candidates gain international exposure. Some examples of these scholarships and awards offered by the programmes are listed as follows:

## 1) **The Thanksgiving Scholarships for Overseas Attachment**

The scholarship is awarded to students of the MSocSc in Clinical Psychology programme on the basis of outstanding performance in coursework and practicum to support them in attending a clinical attachment at a nominated prestigious overseas institution.

## 2) **The Chiu-Kwan-Ying Memorial Scholarship**

The scholarship is awarded every other year to one student of the MSocSc in Clinical Psychology programme on the basis of outstanding performance in the practicum.

## 3) **Dr. Geraldine Mao-Ng Prize in Psychology**

The prize is awarded to one MSocSc in Clinical Psychology student who has achieved the best overall performance and the best research dissertation in his/her final year.

## 4) **HKSAR Government Scholarship Fund**

The scholarships are awarded to students of full-time publicly-funded degree or above level programmes with excellent performance in academic studies. The scholarship is tenable for the normal duration of the programme concerned and renewable annually subject to satisfactory academic performance of the awardees.



## SCHOLARSHIPS, AWARDS AND EXCHANGE OPPORTUNITIES

Apart from the above, a substantial number of students with outstanding achievements are also honoured with prestigious awards, such as:

- Erik Kvan Postgraduate Scholarship
- Philip K. H. Wong Foundation Postgraduate Fellowships
- Hong Kong PhD Fellowship
- HKU Foundation Postgraduate Fellowship
- Reaching Out Award
- Sir Edward Youde Memorial Fellowships
- Swire Scholarship
- The HKAUW Thomas H.C. Cheung Postgraduate Scholarship



# COMMUNITY SERVICE

Our students are committed to community service by providing integrative, specialist psychological services to the general public at our Psychological Services Unit (PSU). In addition, our students are often involved in an array of community service projects and in some instances may assist in providing direct support and consultancy services to the local charities and community organisations.



# STAFF INFORMATION

## FACULTY MEMBERS



### **Dr. Christian S. Chan**

Dr. Chan received a BA in psychology from McGill University and a MA and an APA-accredited PhD in clinical psychology from University of Massachusetts Boston. He completed his clinical training at Cambridge Health Alliance/Harvard Medical School and New York Presbyterian Hospital/Cornell Medical School. His research interests include disaster mental health, positive youth development, and intergroup relations. His work has been published in top journals in his field, including *Clinical Psychology Review*, *Journal of Consulting and Clinical Psychology* and *Journal of Traumatic Stress*. He was a visiting scholar at Nagoya University (2014), New York University (2015), and The University of Queensland (2015).

# STAFF INFORMATION

## FACULTY MEMBERS



**Dr. Wai Sze Chan**

Dr. Chan received her PhD in Clinical Psychological Science from the Department of Psychological and Brain Sciences at Indiana University and completed a postdoctoral fellowship specializing in behavioural sleep medicine at the University of Missouri. Prior to joining HKU, she was an Assistant Professor in the Department of Psychiatry at the Geisel School of Medicine at Dartmouth College and a licensed practicing clinical psychologist in the state of New Hampshire, USA. Her research programme focuses on developing and evaluating sleep interventions for insomnia in patients with comorbid medical and psychiatric illnesses. She is broadly interested in the effects of poor sleep on self-regulation and the subsequent impact on health behaviour and emotional regulation. Her work has been published in the *Sleep Medicine Review*, *Journal of Clinical Sleep Medicine*, *International Journal of Obesity*, and *International Journal of Eating Disorders*.



# STAFF INFORMATION

## FACULTY MEMBERS



**Dr. Diane H.Y. Huang**

Dr. Huang attained her doctoral and master degrees in clinical psychology at The University of Hong Kong. She is a Registered Clinical Psychologist (HKPS) and is the Clinical Supervisor in HKU's Psychological Services Unit. Dr. Huang has extensive experience in psychological assessment and psychotherapy, particularly with issues related to stress management, depression, anxiety, crisis management and interpersonal relationship for many years. She also has a special interest in group and family work.

# STAFF INFORMATION

## FACULTY MEMBERS



**Dr. Frances J. Jin**

Dr. Jin received her BS in Psychology from the University of Iowa, and MA and APA-accredited PhD in Clinical Psychology from Stony Brook University, USA. She is a New York State licensed psychologist in the USA. Her research program targets the intersection between emotion and cognition, investigating the psychological and neural mechanisms of anxiety and depression. She is the Principal Investigator of the Psychopathology, Affective Neuroscience, and Decision Making lab, which uses behavioural experiments, neuroimaging (fMRI and EEG), and computational tools to study the relevant topics. She is also a Principal Investigator of the State Key Laboratory of Brain and Cognitive Sciences at HKU.

# STAFF INFORMATION

## FACULTY MEMBERS



**Dr. Charlene L.M. Lam**

Dr. Charlene Lam obtained her Master's degree in Clinical Psychology from The Chinese University of Hong Kong and her Ph.D. in affective neuroscience and neuropsychology from The University of Hong Kong and King's College London. Prior to beginning her Ph.D., she served as a clinical psychologist at the United Christian Hospital and Kwong Wah Hospital. Dr. Lam was awarded the Li Po Chun Charitable Trust Fund Scholarship, Lee Shau Kee Postgraduate Fellowship, and Erik Kvan Postgraduate Scholarship during her doctoral study. She is passionate about interweaving basic neuroscience and clinical psychology together through translational research. Her research work focuses on identifying mechanisms contributing to pathological fear and anxiety, with the goal of developing targeted interventions for affect dysregulation and enhancing psychological well-being. To answer her research questions, she uses a combination of physiological measures (e.g. pupillometry), functional neuroimaging (fMRI), and behavioural testing.

# STAFF INFORMATION

## FACULTY MEMBERS



### **Prof. Tatia M.C. Lee**

Professor Lee is the Chair Professor (Psychological Science and Clinical Psychology) and the May Endowed Professor (Neuropsychology). She is the Director of the State Key Laboratory of Brain and Cognitive Sciences of the University. During her tenure at the university, she has received numerous awards for her excellence in teaching and research. She is currently a visiting professor at King's College London, UK.

Professor Lee is a registered Clinical Psychologist and a Board Certified Clinical Neuropsychologist. She is active in professional practice, serving people with neurocognitive impairments and/or vulnerable psychological states. She is an elected Fellow of the Society of Clinical Psychology and Society of Clinical Neuropsychology of the American Psychological Association. She is also an elected Fellow of the American Psychological Society.

Professor Lee is active in empirical and translational research. Her current research focuses on the neuropsychological underpinnings of brain health and mental health. She has published over 260 [high impact scientific papers](#).

# STAFF INFORMATION

## FACULTY MEMBERS



**Dr. Carole C.K. Li**

Dr. Li obtained her Master's training in clinical psychology and her PsyD in Clinical Psychology from The University of Hong Kong. She is a Registered Clinical Psychologist and an Associate Fellow with the Hong Kong Psychological Society. Prior to coming to HKU, she was a clinical psychologist with Hospital Authority for over 10 years. In addition, Dr. Li is a Registered Yoga Teacher in USA. She is passionate about integrating mind and body therapies.

# STAFF INFORMATION

## FACULTY MEMBERS



**Dr. Frendi W.S. Li**

Dr. Li completed her Master's training in clinical psychology with The University of Hong Kong, and obtained her PsyD in Clinical Psychology from the University of Surrey, UK. She is a Registered Clinical Psychologist in Hong Kong, and a Registered Practitioner Psychologist of the UK. She has worked in the mental health field for many years, both in HK and the UK, before joining HKU, and has a strong belief in integrating psychological theories and research findings with practice. Her research interests include psychological intervention for psychotic illnesses, child abuse treatment and prevention, transdiagnostic vulnerability factors, as well as treatment efficacy issues. Dr. Li has also been heavily involved in the training and supervision of other clinicians, such as psychiatrists, social workers, counsellors and family doctors, both locally and in Mainland China.

# STAFF INFORMATION

## FACULTY MEMBERS



**Dr. Shirley X. Li**

Dr. Li graduated from University of Toronto where she received her Honours BSc in psychology. She obtained her MA in Trauma Psychology and PhD in Medical Sciences (Psychiatry) from The Chinese University of Hong Kong, and received her Doctorate in Clinical Psychology (DClinPsy) from University College London. She is a Registered Clinical Psychologist in the UK and an Associate Fellow of British Psychological Society. Her clinical and research interests centre on sleep and sleep disorders, particularly the interplay between sleep disturbance and mental health, and psychological and behavioural treatments of sleep problems in the context of psychiatric and medical illnesses in children and adults. Dr. Li has published in top medical and psychiatric journals, such as *Sleep*, *Journal of Clinical Psychiatry*, *Journal of Neurology, Neurosurgery & Psychiatry*, *Neurology*, and *Paediatrics*. She received the Elio Lugaresi WASM Award for Sleep Medicine from the World Association of Sleep Medicine in 2009. She was awarded the Young Investigator Award in the World Congress on Sleep Medicine in 2013 and 2015 respectively.

# STAFF INFORMATION

## CLINICAL ADJUNCT FACULTY MEMBER



### **Prof. Calais K.Y. Chan**

Professor Chan received his BSc (Hons) in Professional Psychology, MPsych (Hons) in Clinical Psychology, and PhD in Experimental Clinical Psychology from the University of New South Wales in Australia.

His major research interest lies in the role of cognitive processes underlying human emotion and psychopathology. His clinical specialty is in the practice of cognitive behavioral interventions for a wide range of psychological problems.

Professor Chan is a Fellow of the Hong Kong Psychological Society. He currently serves as the Vice-chairman for the Chinese Association of Cognitive Behaviour Therapy. He is also appointed Adjunct Professor Honorary at the Department of Psychiatry, The Chinese University of Hong Kong. In addition to university teaching, Professor Chan runs a private practice in clinical and forensic psychology. He has been appointed by the government and private legal firms to serve as psychological expert for over 300 litigation cases. He is well known in the field for his longstanding commitment to an evidence-based, scientific approach to psychological work and practice.



# MSocSc (Clinical Psychology)

## Advisory Panel (External Members)

Our Master of Social Sciences in Clinical Psychology Programme invites senior clinical psychologists and field experts from various major settings to serve as our advisory panel members. Advisory panel members offer professional advice to the Programme on admission policies and curriculum design, as well as future development of the programme.



### [Left 1, 2, 3](#)

**Dr. Lau, Kam Lun Edmond**

Psychological Services Group, Hong Kong Police Force

**Dr. Cheung, Chuen Yih Amos**

Division of Clinical Psychology, Hong Kong Psychological Society

**Dr. Chong, Heung Chuen George**

Clinical Psychology Service Unit, Kwai Chung Hospital

### [Right 1, 2, 3, 4](#)

**Dr. Hui, Shuk Han Judy (Chairperson)**

Correctional Services Department

**Dr. Tsang, Yee Ha Lucia**

Child Assessment Service, Department of Health

**Dr. Kwok, Wai Yee Alice**

Prince of Wales Hospital

**Dr. Ma, Yee Man Ellen**

Social Welfare Department



## Department of Psychology

Room 627, The Jockey Club Tower  
Centennial Campus  
The University of Hong Kong  
Pokfulam Road, Hong Kong

Tel: 3917-5866

Fax: 2858-3518

E-mail: [cwfung@hku.hk](mailto:cwfung@hku.hk)

Homepage: [www.psychology.hku.hk](http://www.psychology.hku.hk)

The Department of Psychology and The University of Hong Kong reserve the right to update/amend other details without prior notice.

All rights reserved. Updated in November 2020